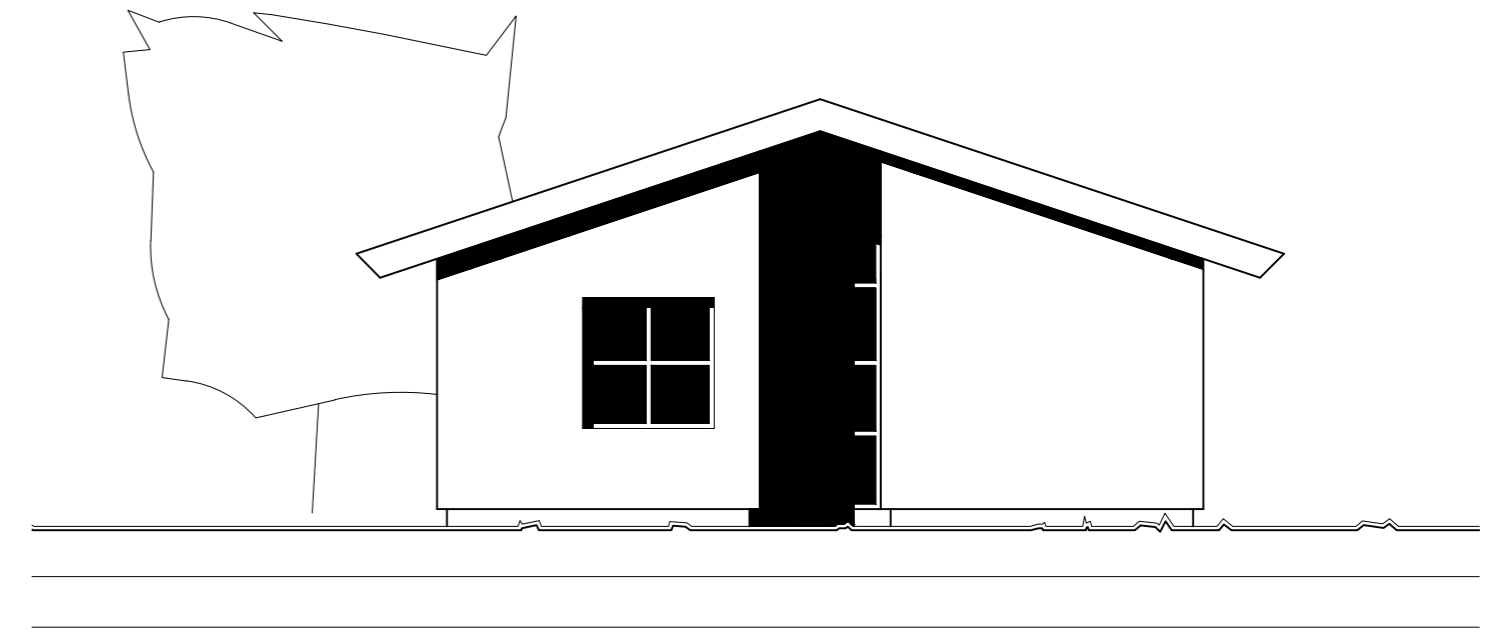
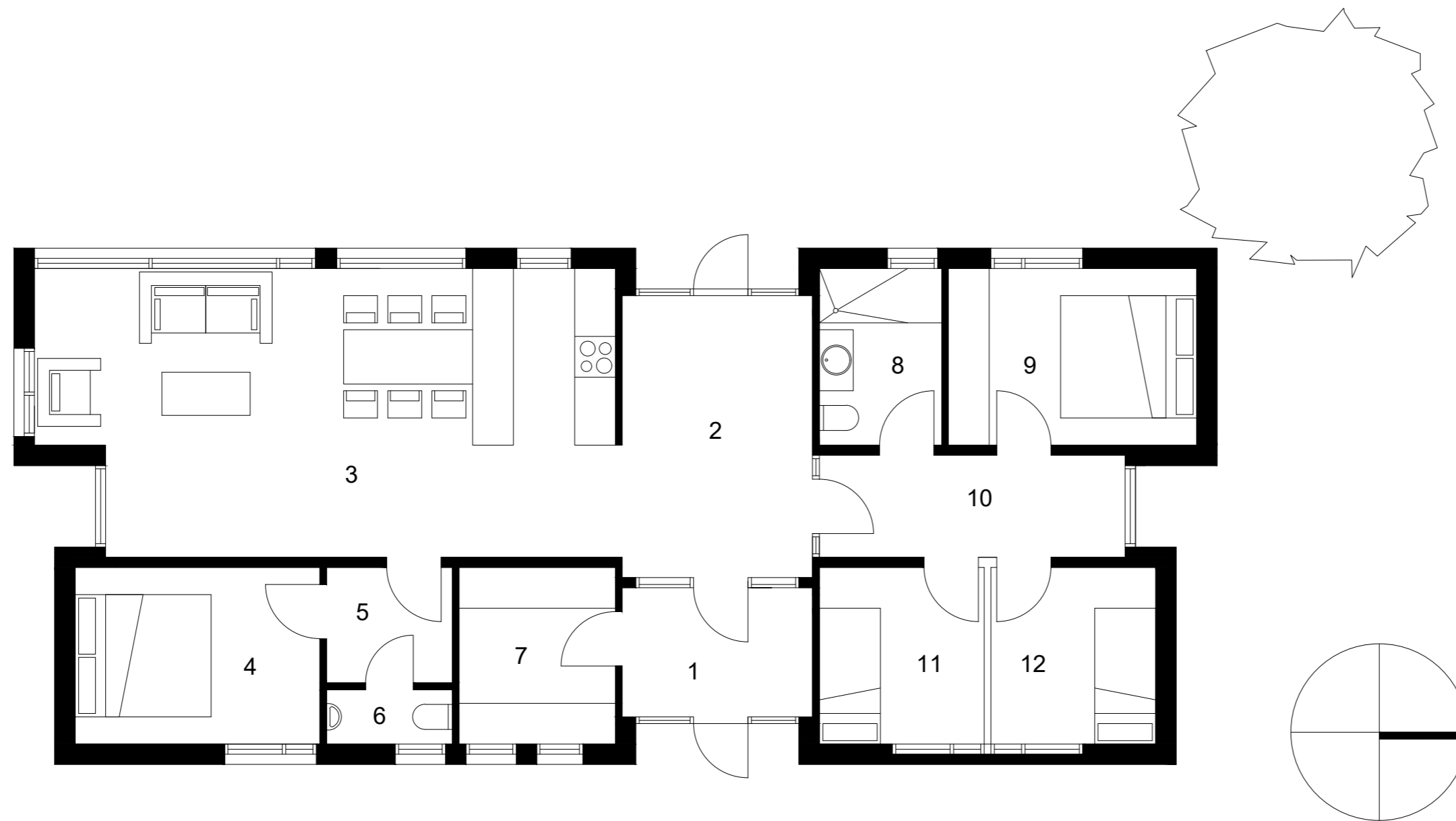




AUSTUR



SUÐUR



FLATARMÁL 124,9 m²
RÚMMÁL 430,0 M³

LÓÐARSTÆRD 4.622 m²
NÝTINGARHLUTFALL 0,027

1	ANDDYRI	5,3 m ²
2	HOL	11,6 m ²
3	STOFA/ELDHÚS	34,8 m ²
4	HERBERGI	9,4 m ²
5	GANGUR	3,1 m ²
6	VS	1,5 m ²
7	ÞVOTTUR/GEYMSLA	6,0 m ²
8	BAÐHERBERGI	4,7 m ²
9	HERBERGI	9,5 m ²
10	GANGUR	6,8 m ²
11	HERBERGI	6,3 m ²
12	HERBERGI	6,3 m ²